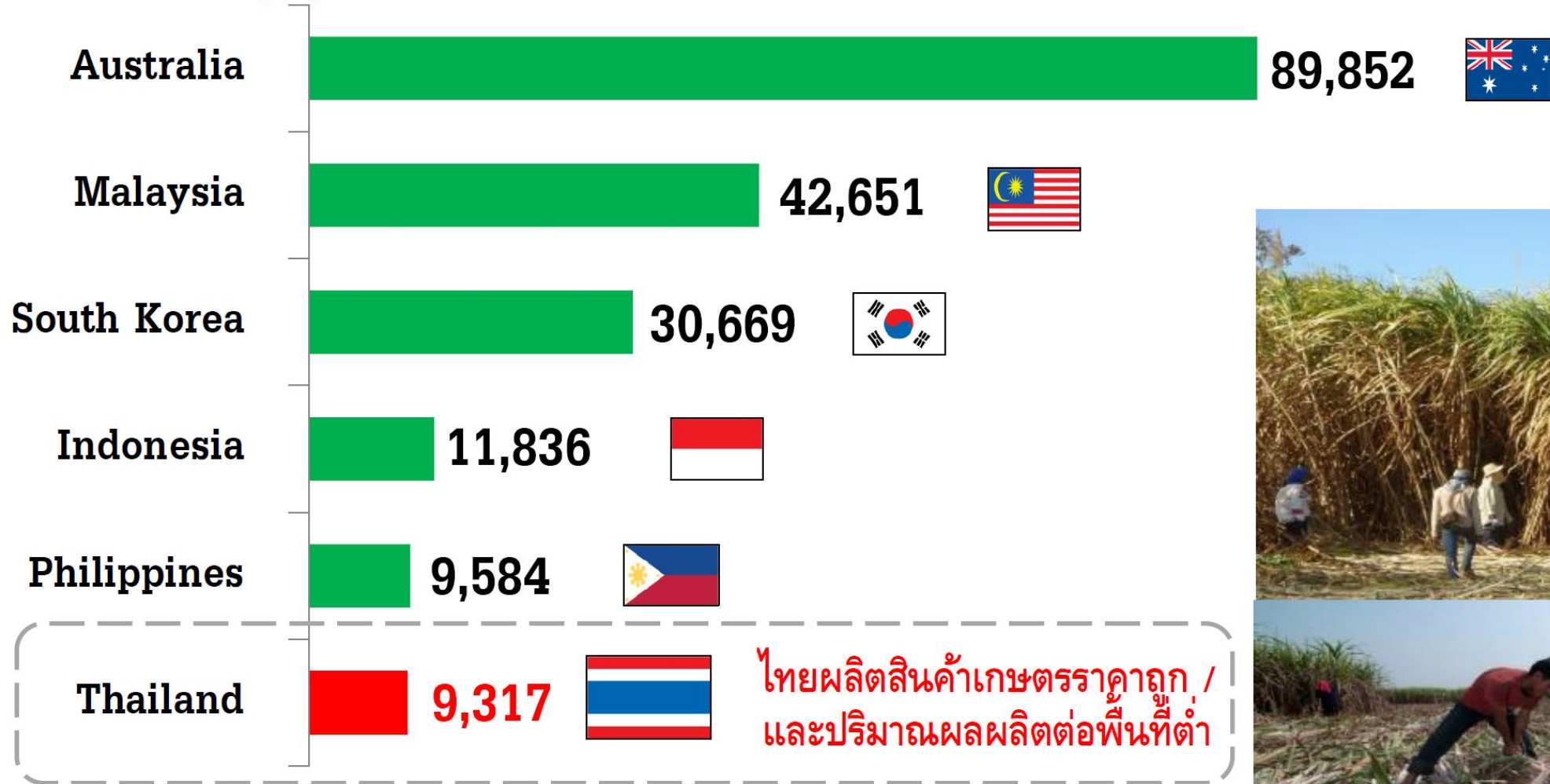


Agricultural Productivity: Thailand ranked 58th out of 68 countries

US\$/Person employed



Source: IMD World Competitiveness Yearbook 2021



ประสิทธิภาพ : รถตัดอ้อยกับแรงงานตัดอ้อย

ตัดอ้อย



750 ตัน/วัน



ไทย

ใช้แรงงาน



620 คน



ออสเตรเลีย

ใช้รถตัด



10 คน



มิตรผลโมเดิร์นฟาร์ม

ใช้รถตัด



14 คน

- มิตรผลโมเดิร์นฟาร์ม ประสิทธิภาพ ปี 2564/65 ตัดอ้อยเฉลี่ย 350 ตัน/วัน/คัน (รถตัดอ้อยทำงาน 10-11 ชม./วัน)
- รถตัดอ้อย 1 คัน ประกอบด้วย 7 คน ได้แก่ คนขับรถตัด (1 คน) คนขับรถบรรทุกพ่วง 4 คัน (4 คน) คนขับรถแทรกเตอร์ Bin 2 คัน (2 คน)



Mitr Phol's Business Model: Bio-circular Economy (Zero Waste / Waste to Value)

VALUE CREATION FOR SUSTAINABILITY



S&P Global

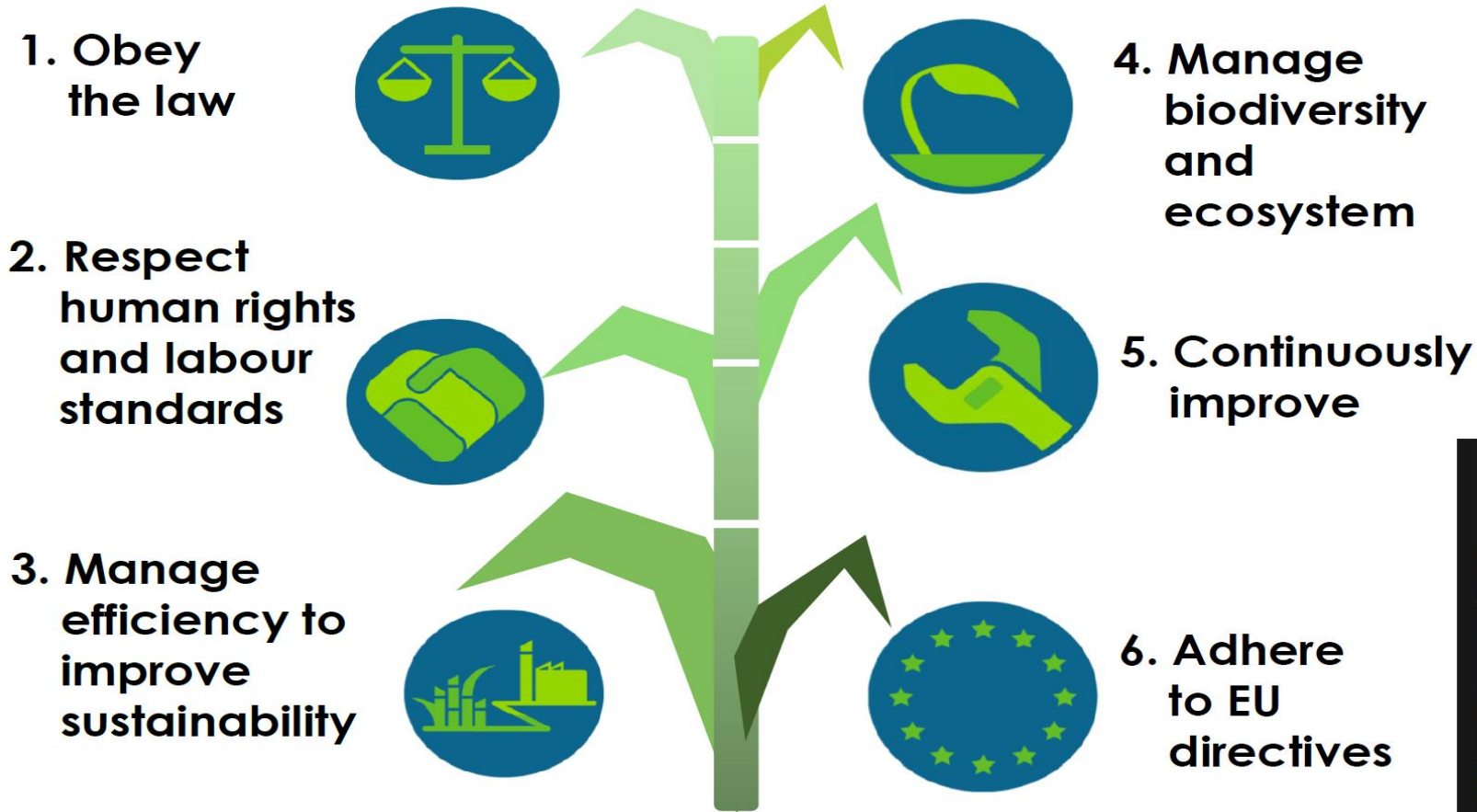
- Top 1% (Gold class) score among 260 food companies worldwide
- Top-ranked across environmental, social and governance parameters
- S&P Global Sustainability Yearbook member for 5 consecutive years



- 2023 marked our 1st year in CDP program
- Climate change management ranked as "B", higher vs CDP average (Asia / global average: "C", F&B processing: "B-")

Bonsucro Standard

Bonsucro



Mitr Phol's Net Zero Pathway: A Long but Clear Direction



- GHG emissions Baseline



Carbon Neutrality

- Scope 1&2 reduction by 42%
- Scope 3 reduction by 25%

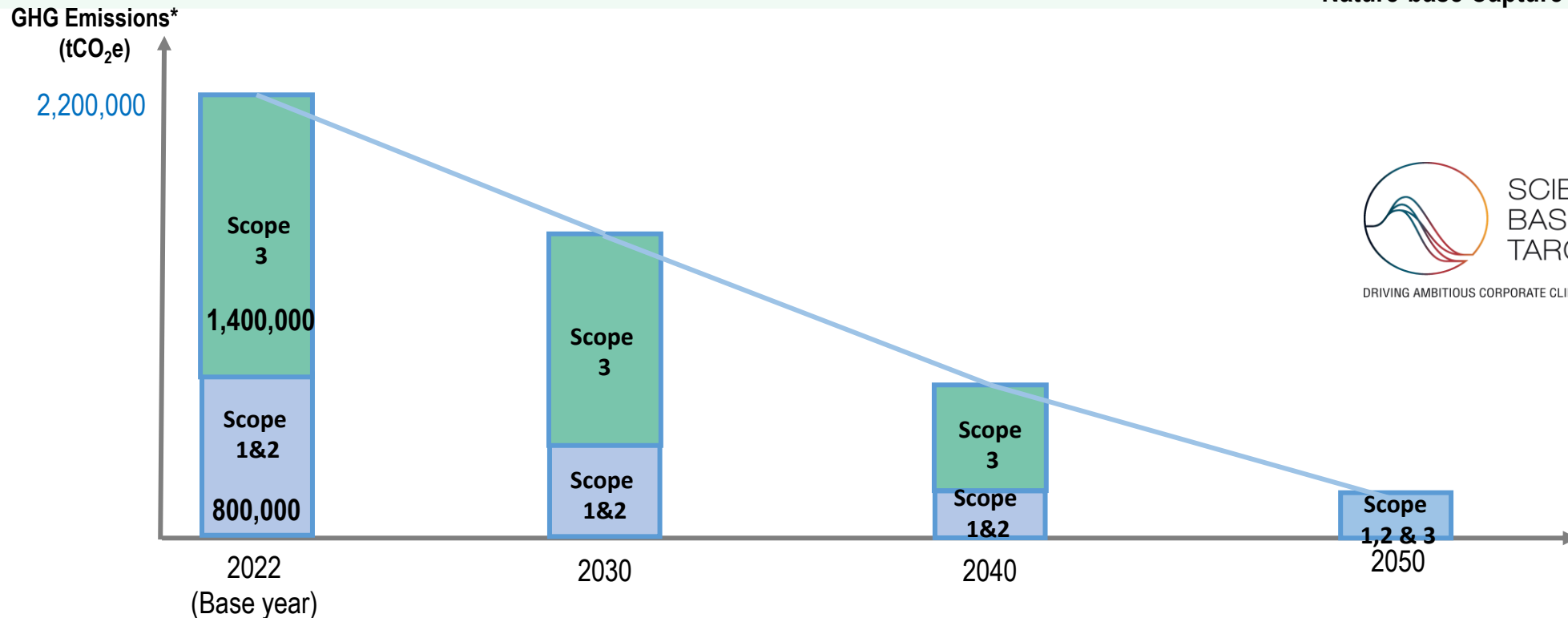


- Align with a SBTi 1.5°C Pathway



Carbon Net Zero

- Scope 1, 2 & 3 reduction by 90%
- Remaining 10% allowed to use Nature-based Capture / CCS

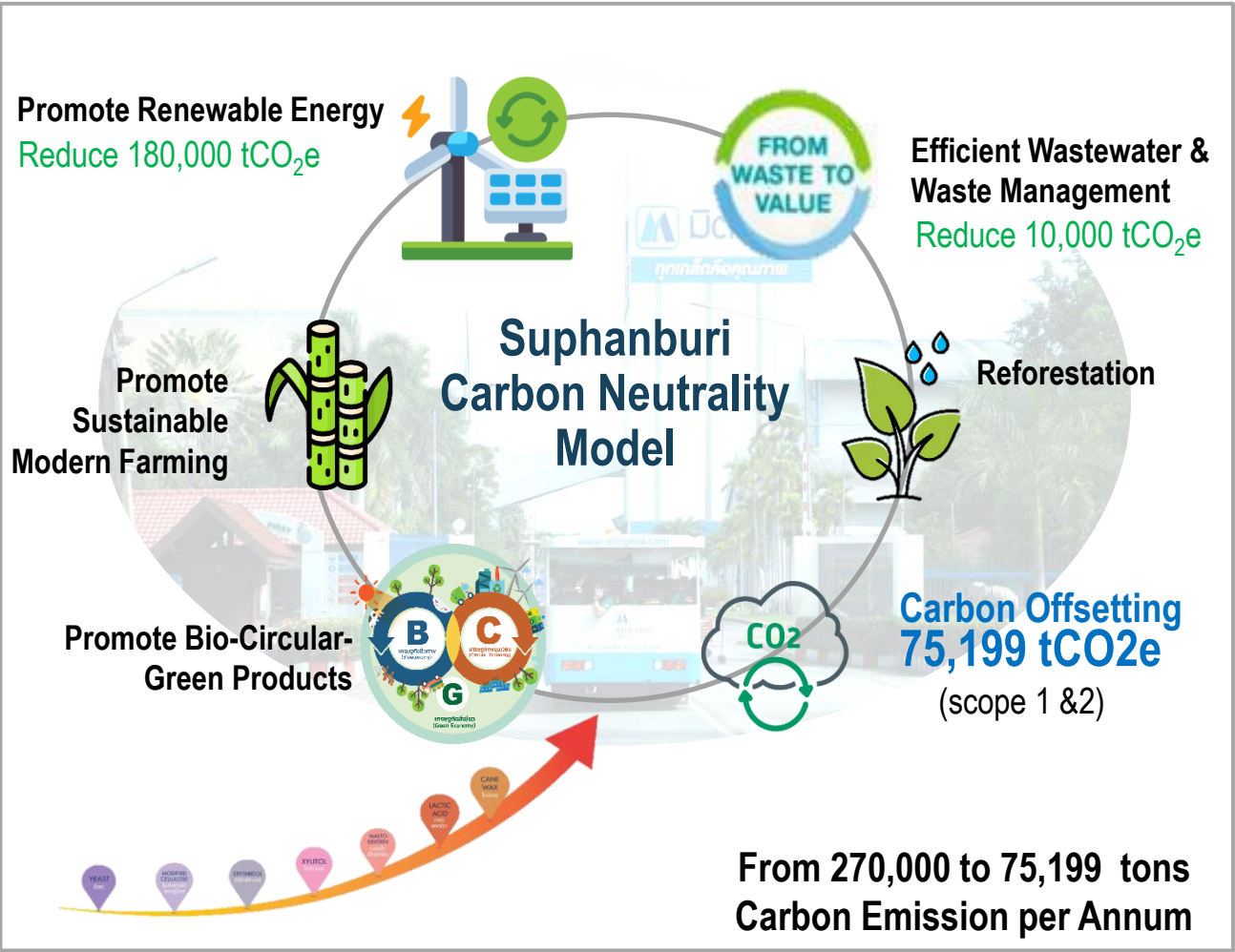


DRIVING AMBITIOUS CORPORATE CLIMATE ACTION

*Note: GHG emissions in this graph is not included the emissions from FLAG.

Mitr Phol's Net Zero Pathway: Another Major Milestone in Net Zero Commitment

Mitr Phol's Dan Chang is Thailand's First Carbon Neutrality Complex in 2023



Mitr Phol's Net Zero Pathway: Net Carbon Credit Position



Thailand Voluntary Emission Reduction Program:
 Annual **Carbon Credit** Registration = **900,000 tCO₂e/yr**
 [Stock as of Q1/2024 = **2.7 Million tCO₂e**]

Renewable Energy Certificates:
 Annual **RECs** certified = **1.3 Million RECs/yr**



Carbon Footprint Organizations:
58 Plants across 7 BUs



Carbon Footprint Products:
38 Products



Carbon Footprint Reduction:
8 Products



Life Cycle Assessment:
5 Ethanol Plants
 EU Red (Bonsucro):
3 Ethanol Plants

Mitr Phol at a Glance

Sugar



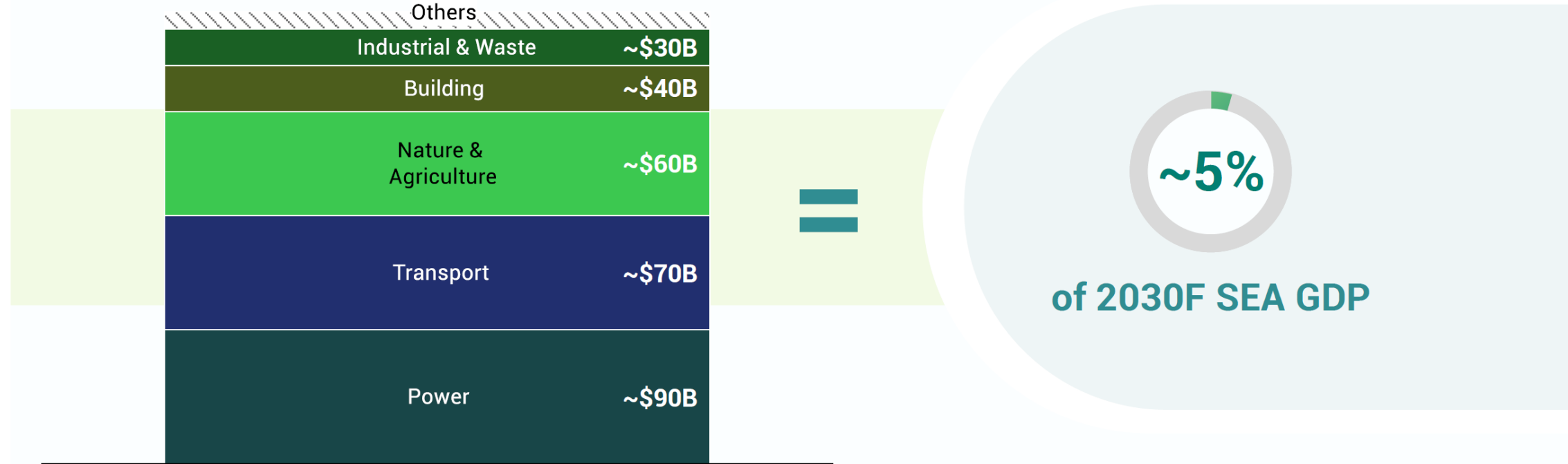
Value Added / B2C Products



Climate Change Value Creation Opportunities

Size of prize | Unlocking the region's green economy could be worth another \$300B annually by 2030

~\$300B¹



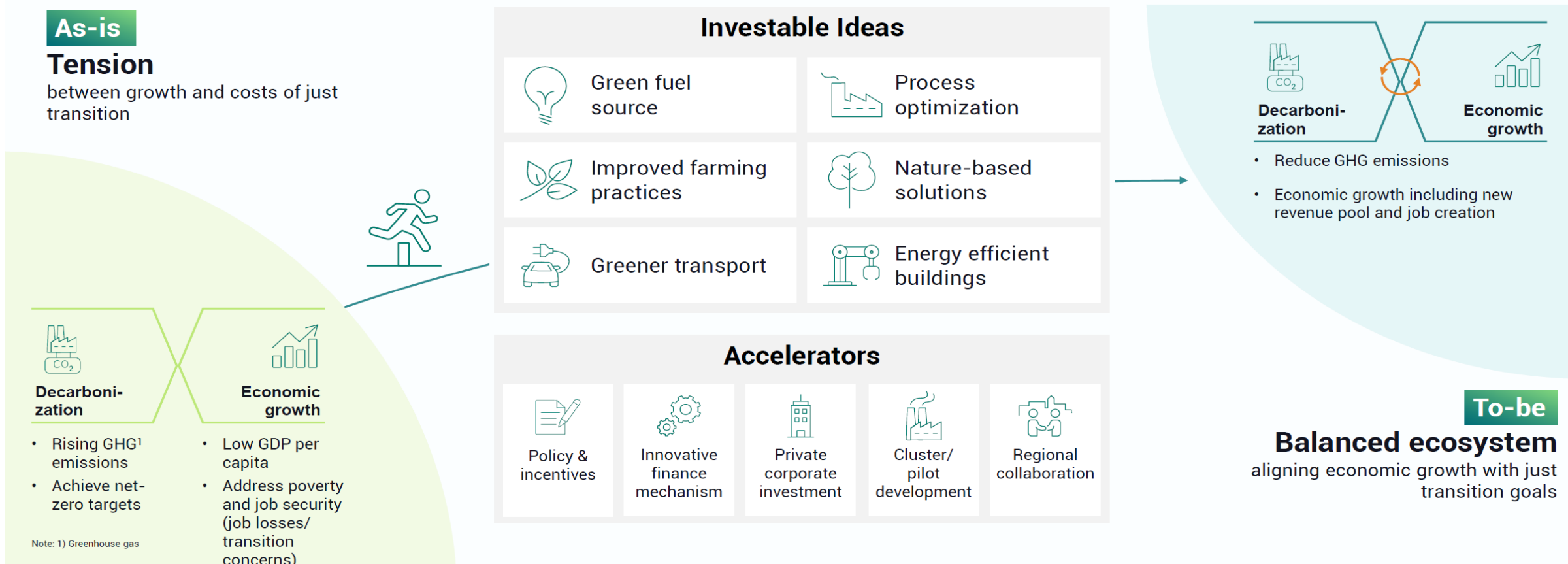
Southeast Asia Green Economy revenue pool by 2030

Notes: 1) Gross new revenue— updated the size of prize data from 2020 and 2022 report; Others—Carbon trading market; annual gross new revenue does not include economic losses from green transition such as job losses, businesses shut down from coal plants phase-out, or economic losses of decreasing sales of ICE vehicles | Sources: IEA; OECD; IRENA; BNEF; MAS; Climate Watch; Lit. search; Bain analysis

Source: Southeast Asia Green Economy 2024: Moving the Needle by Bain&Company, GenZero, Standard Chartered and Temasek

Climate Change Value Creation Opportunities

Transition potential | SEA has a clear opportunity to leverage the coming transition for competitiveness and economic growth—not just decarbonization



Source: Southeast Asia Green Economy 2024: Moving the Needle by Bain&Company, GenZero, Standard Chartered and Temasek

